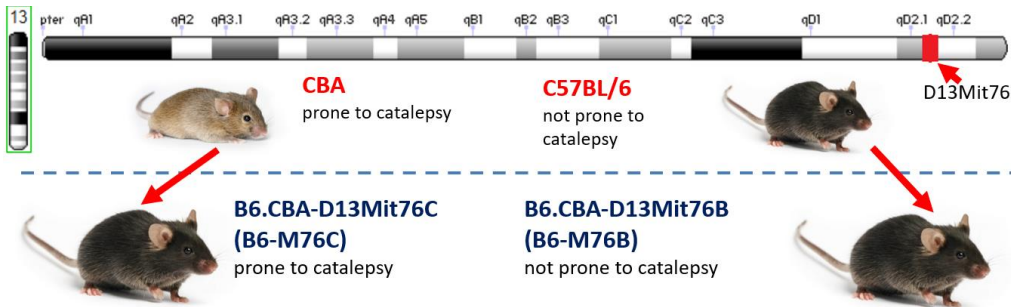


# INTERPLAY BETWEEN 5-HT AND BDNF SYSTEM IN RECOMBINANT MOUSE STRAIN UPON CHRONIC FLUOXETINE ADMINISTRATION

Rodnyy A.Ya., Kondaurova E.M., Antonov Y.V., Ilchibaeva T.V., Tsybko A.S., Naumenko V.S.  
 Institute of Cytology and Genetics, Novosibirsk, Russia



## Design of experiment



Behaviour response to stress

Neurogenesis and neuroplasticity

Mediate therapeutic efficacy to antidepressants

Key players in mechanisms of depressive disorders



14 days of fluoxetine or saline administration

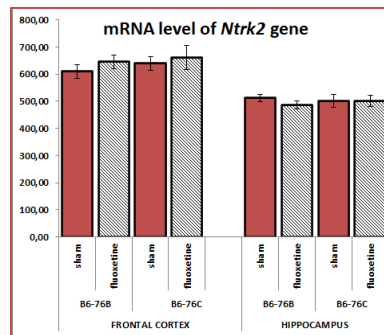
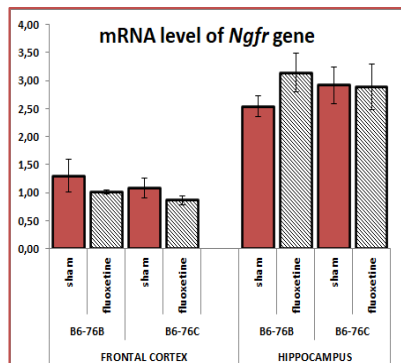
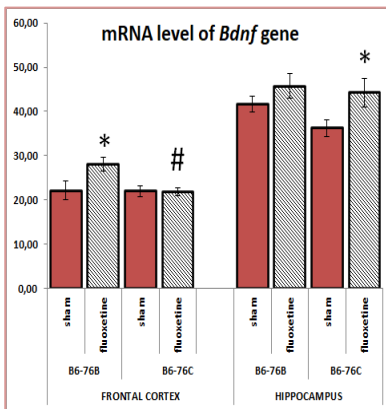


Brain extraction



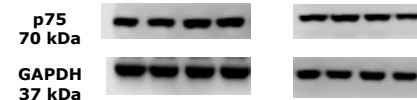
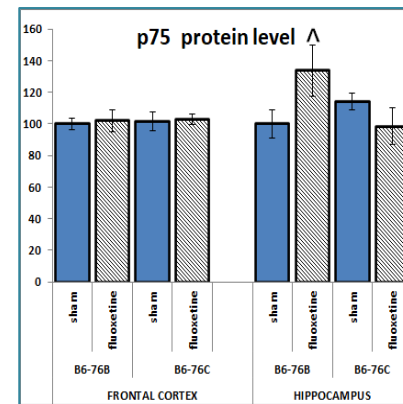
RT-PCR in real time → mRNA  
 Western-Blotting → protein  
 HPLC → monoamines

# BDNF system mRNA expression

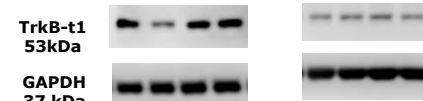
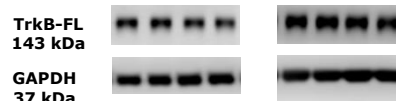
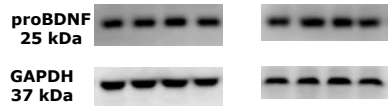
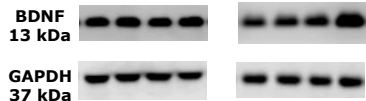
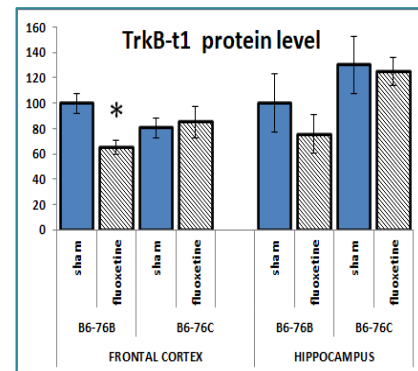
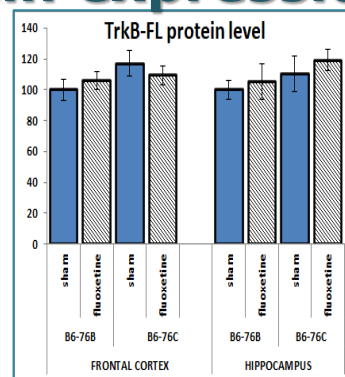
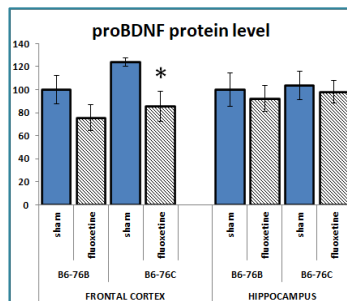
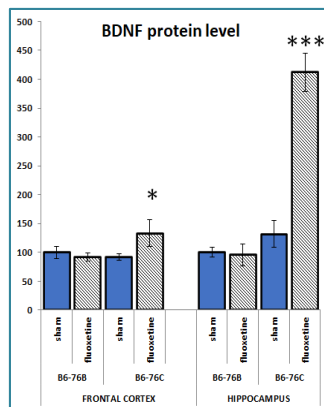


\* p<0.05 in comparison with the same strain sham group (^ p=0.06)

# p<0.05 in comparison with another strain fluoxetine group

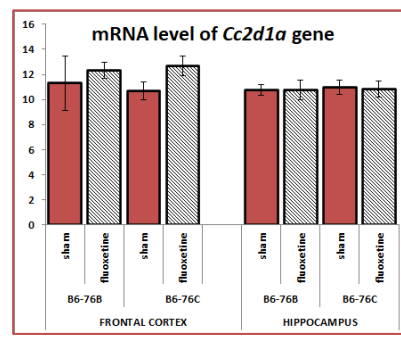
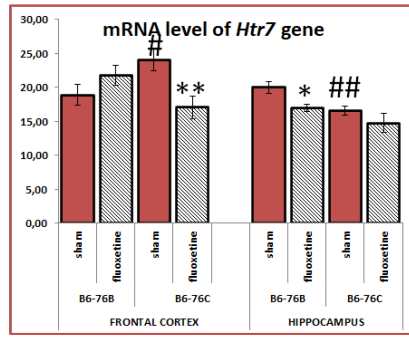
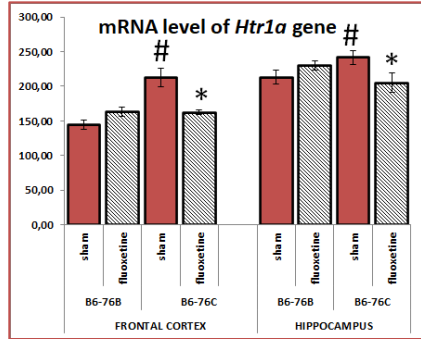


# BDNF system protein expression

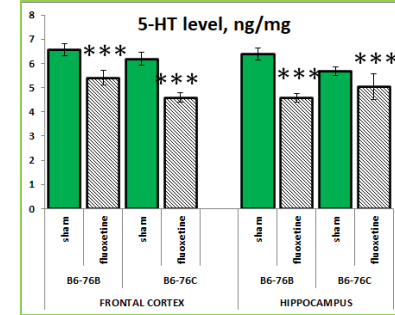


# 5-HT system mRNA expression

\* p<0.05, \*\* p<0.01, \*\*\* p<0.001 in comparison with the same strain sham group  
# p<0.05, ## p<0.01 in comparison with another strain sham group



# HPLC



# 5-HT system protein expression

